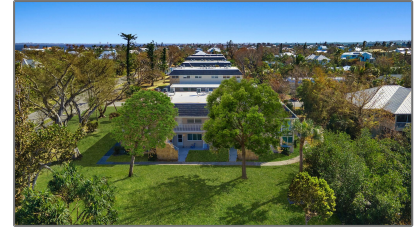


# Condo

1,000 Sqft - 641 Periwinkle Way, Sanibel, Florida  
33957



## Basic [Details](#)

Property Type:	<b>Condo</b>
Listing Type:	<b>For Sale</b>
Listing ID:	<b>2240716</b>
Price:	<b>\$369,000</b>
Bedrooms:	<b>2</b>
Bathrooms:	<b>1</b>
Half Bathrooms:	<b>0</b>
Square Footage:	<b>1,000 Sqft</b>
Year Built:	<b>1970</b>
Lot Area:	<b>0 Acre</b>
Country:	<b>US</b>
State:	<b>FL</b>
County:	<b>Lee County</b>
City:	<b>Sanibel</b>
Subdivision:	<b>FL</b>
Zipcode:	<b>33957</b>

## Features

✓	Heating System:	<b>Central Heat</b>
✓	Cooling System:	<b>Ceiling Fan(s), Central Air/cooling</b>
✓	View:	<b>Lawn/garden</b>
✓	Parking:	<b>Assigned, Covered, Single carport</b>
✓	Furnished:	<b>Exceptions, Part furnished</b>

## Address [Map](#)

Street:	<b>Periwinkle Way</b>
Street Number:	<b>641</b>

Floor Number: **0**

Longitude: **W83° 58' 11.7"**

Latitude: **N26° 26' 57"**

## Agent [Info](#)

---



South Seas

✉ [realestate@southseas.com](mailto:realestate@southseas.com)

---